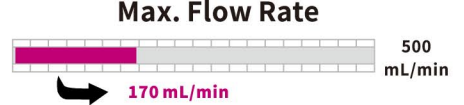
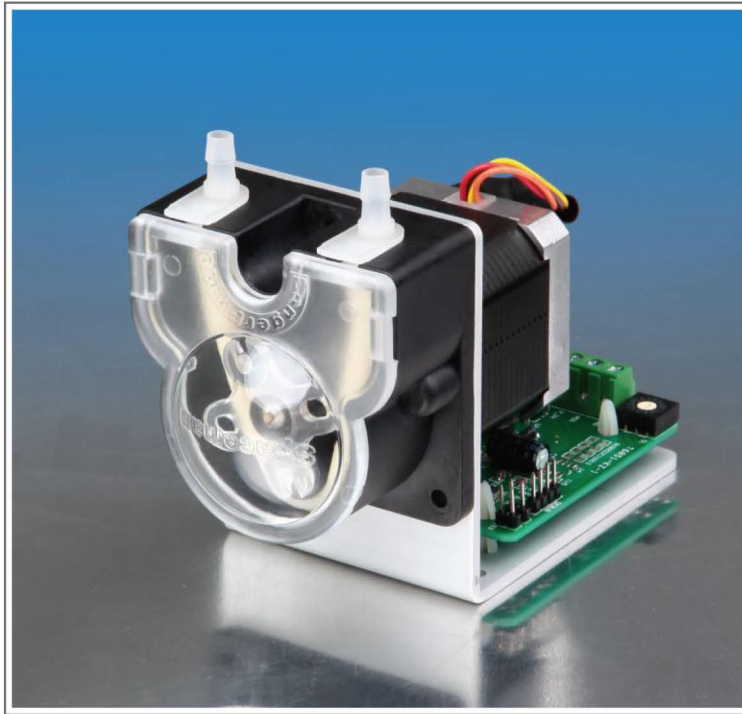


# OEM Variable Speed Peristaltic Pump

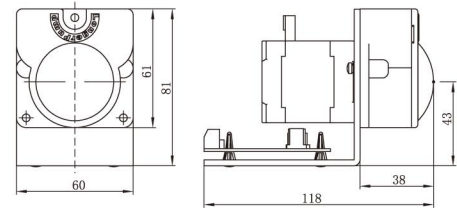


## T100&JY15-12 Series



Use JY15-12 pump head,  
Mainly designed for OEM applications.  
Multi-control modes are available.  
Soleplate installation is standard,  
panel installation is optional.

### Installation Drawing



Tubing	Max. Flow Rate(mL/min)
25"	118mL/min
17"	170mL/min

OEM PERISTALTIC PUMP

### Pump Specification

Items	Specification
Speed	≤100rpm
Speed resolution	0.1rpm
*Direction control	Direction is controlled by external switch signal.CW when switch is open, CCW when switch is closed
*Start/stop control	Start/stop is controlled by external switch signal. Pump runs when switch is open, stops when switch is closed
*BCD dial switch speed control	The speed is divided into 15 grades. BCD position 1-F corresponding to (rpm)5,10,15,20,25,30,35,40,45,50, 60,70,80,90,100 (rpm)
*External speed control (optional)	4-20mA corresponding to 0.1-100rpm, 0-5V corresponding to 0-100rpm、 0-10V corresponding to 0-100rpm, 0-10kHz corresponding to 0-100rpm
**Communication pump ID	Pump ID range is 1-30, 31 is broadcast address
**Bit rate	1200bps or 9600bps
Dimension (L×W×H)	118×60×81(mm)
Relative humidity	<80%
Operating temperature	0 to 40°C
Power supply	DC11.4V-25.2V
Power consumption	≤12W
Weight	0.54kg

Note: Items with \* are only available for products with dial switch and external speed control signal.  
Items with \*\* are only available for product with RS485.



### Pump Selection Table

Model	Product Code	Control Mode	Certificate
T100-S300&JY15-12-A	056030A	Dial switch and external signal (4-20mA)	CE certified and Meet RoHS requirement
T100-S301&JY15-12-A	056031A	Dial switch and external signal (0-5V)	
T100-S302&JY15-12-A	056032A	Dial switch and external signal (0-10V)	
T100-S303&JY15-12-A	056033A	Dial switch and external signal (0-10kHz)	
T100-S500&JY15-12-A	056034A	RS485 communication	

\* CE certified product based on request \*